

LAXYO ENERGY LIMITED



LAXYO

We, the energy people....

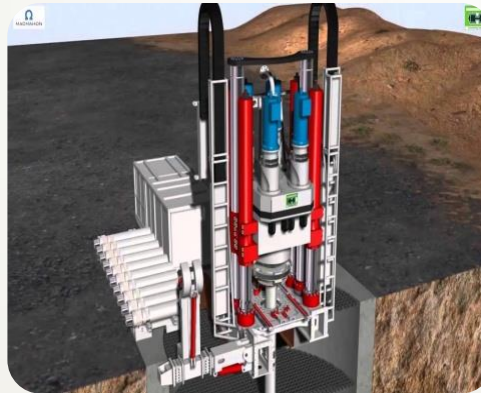
AN ISO 9001:2015 AND ISO 45001:2018 CERTIFIED COMPANY

TABLE OF CONTENTS

1. INTRODUCTION

2. SERVICES

3. REFERENCES



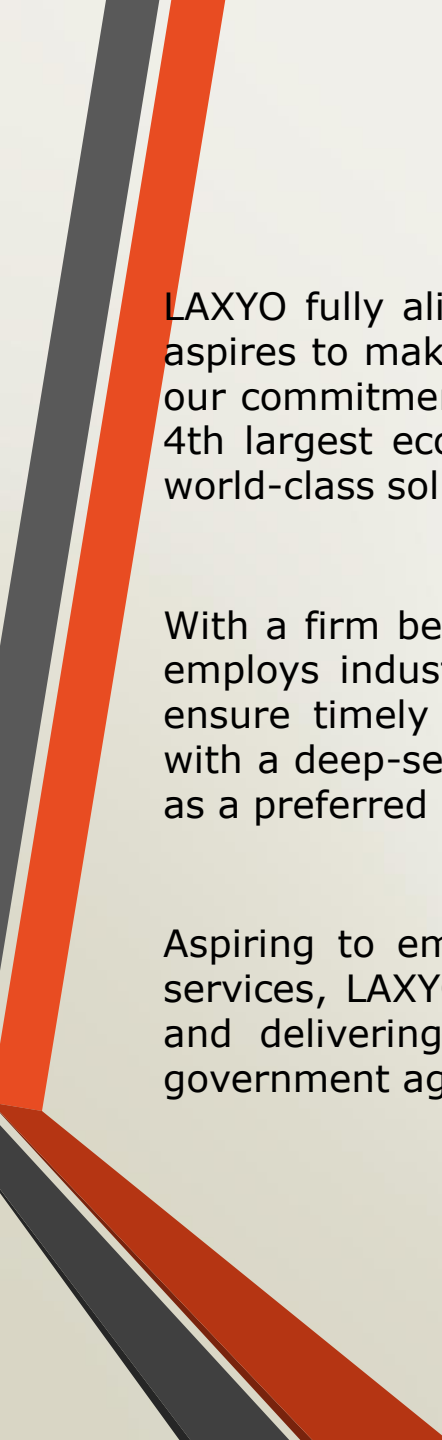
INTRODUCTION

LAXYO: Elevating Engineering Excellence

Founded in mid-2007 through the strategic amalgamation of its sister concerns, LAXYO has rapidly emerged as a distinguished force within the Indian engineering services sector. Headquartered in India, the company has established itself as a trusted provider of niche, dependable and value-centric engineering solutions across a diverse array of industrial domains. LAXYO's evolution reflects a relentless pursuit of excellence, innovation and integrity in the development of technical critical infrastructure.

LAXYO's technical capabilities span a broad and versatile range of sectors, including Railway Track-related Infrastructure (with sound credentials under the Indian Railways), Raise Boring in the Mining industry, Dredging & Reclamation Operations and the comprehensive Operation and Maintenance of industrial plants. Its multifaceted expertise enables it to deliver holistic, cost-efficient and technically robust services tailored to the unique needs of both public institutions and private enterprises.

Guided by its enduring philosophy, "We the Energy People", LAXYO is committed to delivering Engineering and Infrastructure services that integrate innovation, operational efficiency and uncompromising quality. The company's business model is deeply rooted in the principles of strategic outsourcing, empowering clients to enhance productivity, reduce operational expenditures and reallocate critical resources towards their core strategic objectives.



LAXYO fully aligns with the Government of India's "Viksit Bharat 2047" vision, which aspires to make India a developed nation by its 100th year of independence. Through our commitment to infrastructure development and inclusive growth. As India became 4th largest economy on the globe, Laxyo remains dedicated to building sustainable, world-class solutions that empower communities and drive national progress.

With a firm belief in technological advancement and continuous improvement, LAXYO employs industry-leading methodologies, tools and quality assurance frameworks to ensure timely and flawless project execution. LAXYO's client-centric ethos, coupled with a deep-seated commitment to performance excellence, positions the organization as a preferred partner for turnkey assignments and item-rate contracts alike.

Aspiring to emerge as a national leader in diversified engineering and outsourcing services, LAXYO remains unwavering in its dedication to raising industry benchmarks and delivering bespoke, future-ready solutions to a discerning clientele spanning government agencies and private corporations across India.



OUR VISION

To deliver comprehensive, high-quality technical services at a competitive cost through a professional, dependable and forward-thinking approach to foster enduring, sustainable and trust-based relationships that ensure exceptional value addition and the highest degree of client satisfaction, while consistently maintaining a strategic edge in our domain of operations.

OUR MISSION

A steadfast commitment to the continuous and progressive enhancement of operational methodologies and procedures, coupled with the systematic identification of training needs to foster workforce productivity and multi-skill development, alongside the institutionalisation of a permanent framework dedicated to exploring avenues for quality improvement and cost optimisation ultimately aimed at delivering superior value to the customer.

OUR SERVICES

Railway Execution



Raisebore Operations



Operation & Maintenance



Dredging & Reclamation



Railway Engineering

❖ Railway Track Construction & Upgradation

- Execution of new railway track laying works, including earthwork, formation, ballast supply and spreading and track linking.
- Track doubling, tripling and gauge conversion projects.
- Complete Track Renewal, Rehabilitation and Reconditioning.



❖ Railway Siding Projects

- Development and Maintenance of Private and Public Railway Sidings for Industrial Plants and Ports.

❖ Civil Engineering Works in Rail Infrastructure

- Construction of ROB, RUB, Major, Minor Bridges and culverts.
- Construction of station buildings, platforms and circulating areas.
- Elimination of LCs and Construction of LHS (Limited Height Subways).
- Execution of RCC and structural works in yards and terminals.
- Execution of service buildings, control rooms and residential quarters in railway premises.



❖ Permanent Way Works (P-Way)

- Execution of P-Way maintenance contracts, including mechanised maintenance.
- Supply of P-Way materials including sleepers and fittings.
- Track tamping, alignment correction and curve realignment using advanced equipment.

Raise Bore Operations

Over the past several years, LAXYO have come to deeply appreciate the critical importance of conducting Raise Boring operations with the highest standards of safety, efficiency and cost-effectiveness. In pursuit of this, LAXYO invested unwavering effort and discipline to build the requisite capabilities to execute a diverse range of raise boring assignments. LAXYO's extensive experience in subsurface mining activities has played a pivotal role in the successful execution of raise boring projects across India.

LAXYO's fleet includes the exceptionally robust drilling machines engineered for precision and durability, each capable of executing vertical boreholes up to 800 meters in depth and constructing shafts as wide as 6 meters. In alignment with LAXYO's forward-looking strategy, LAXYO is poised to further augment its Raise Boring capabilities through the acquisition of additional high-capacity rigs in the near future.



Introduction to Raise Bore Operation

Raise boring is used to create a circular, vertical or horizontal excavation between two existing levels or tunnels in an underground mine without the use of explosive. It is mostly used for air ventilation shafts, Ore pass, evacuation passage, and for surge shafts from the surface to underground or from different levels of underground

The raise boring method is a way to make vertical shaft by back reaming the pilot hole using drill rigs. For rotary type of drill rigs, the rotational torque and axial force are exerted to drill bit (called pilot hole drill bit for raise boring machines) along the drill pipe to create a circular hole. Generally, the cuttings are removed from the hole with the aid of flushing medium (Water). The construction process of the pilot hole by raise boring machines is the same as that by conventional drilling machines except the back reaming process introduced in the raise boring method. When the pilot hole breaks through into the lower level, the drill bit is removed and replaced with a large-diameter reaming head. The reamer is rotated and pulled back toward the drilling unit, and through this way a large-diameter shaft is formed.

Advantages of Raise Boring

Compared to conventional or long-hole raises, Raise Boring offers several significant advantages. Since it's mostly mechanized, it requires just minimal labour once set up. As well, safety and efficiency is improved since it doesn't require blasting, and is a continuous process with less downtime.

Few of the advantage in terms of safety are as under:

- Safe.
- No explosives used.
- No rock fractures associated with blasting.
- Stable circular excavation results in zero damage to the sidewalls of the hole or shaft.
- Accurate hole or excavation.

Raise Shafts have different advantages and can be used as below:

- It provides fresh air ventilation in tunnels and underground mines where there is a deployment of manpower
- The raise shaft can be used for safe evacuation of manpower in case of any exigency
- The raise shaft can be used for shifting of material from one level to another level.
- The raise shaft can be used as surge shaft also to account or water hammering effect

Dredging and Reclamation

Among LAXYO's diverse verticals, LAXYO's foray into the dredging segment exemplifies its strategic foresight, technical prowess and ability to deliver mission-critical solutions in one of the most challenging and dynamic engineering domains.

LAXYO's dredging vertical stands as a testimony to its engineering dexterity, environmental sensitivity and unwavering pursuit of operational excellence continuously reinforcing its stature as a trusted partner in India's maritime and inland water infrastructure transformation.

State-of-the-Art Equipment & Methodology

Leveraging an array of modern dredging equipment, including cutter suction dredgers (CSDs), amphibious dredgers and high-capacity slurry pumps, LAXYO ensures seamless project execution with precision and time efficiency. The company integrates hydrographic surveys, bathymetric mapping and sediment management technologies into its operations to uphold the highest standards of performance, safety and regulatory compliance.



Core Competencies

- River and Canal Dredging, Restoration of Navigability, Flood control enhancement and ecological balance in riverine systems.
- Port and Harbour Dredging, Execution of capital and maintenance dredging for berth deepening, turning basins and approach channels.
- Reservoir and Dam Desiltation, Revival of storage capacities and restoration of hydraulic efficiency in large-scale reservoirs and dams.
- Reclamation and Shoreline Development, Land reclamation for urban and industrial development, erosion control and embankment stabilization.

Enduring Client Relationships

Built on integrity, performance consistency and transparent project governance, LAXYO's client relationships span public sector enterprises, port trusts, municipal authorities, irrigation departments and industrial conglomerates. The company's dredging arm has earned accolades for its commitment to delivering value beyond the contract ensuring timely delivery, cost optimization and sustainable impact.

Operation & Maintenance of Industrial Plants

Laxyo, has firmly established itself as a formidable force in the domain of Operation and Maintenance (O&M) of industrial plants. With a deep-rooted legacy of engineering expertise, a culture of operational discipline and a forward-thinking strategic ethos, the company delivers comprehensive O&M solutions that uphold the principles of efficiency, safety, sustainability and reliability across a diverse spectrum of industrial sectors.

In an era where operational excellence directly correlates with enterprise resilience, LAXYO is steadfastly committed to being a partner of choice for industries seeking highly efficient, technology-integrated and sustainability-driven O&M solutions. With every engagement, the company reaffirms its dedication to engineering reliability, elevating plant potential and safeguarding long-term asset value.

LAXYO views Operation and Maintenance not merely as a service, but as a critical lever for ensuring uninterrupted productivity, prolonging asset life and maximizing return on infrastructure investment. The company adopts a proactive and systems-driven approach, wherein preventive maintenance, predictive diagnostics and performance analytics converge to provide 360-degree plant management solutions.



Laxyo's O&M division offers end-to-end solutions encompassing:

- Comprehensive Operation of Industrial Plants.
- Day-to-day plant operations, performance monitoring, SOP adherence and optimization of plant throughput.
- Preventive and Predictive Maintenance.
- Implementation of maintenance schedules based on OEM recommendations, real-time asset diagnostics and risk-based maintenance planning.
- Emergency and Corrective Maintenance.
- Rapid response mechanisms for fault rectification and unscheduled repairs to minimize downtime and production loss.
- Inventory and Spares Management.
- Intelligent stock planning, tracking of critical spares and coordination with OEMs to ensure seamless maintenance cycles.
- Energy Management and Efficiency Enhancement.
- Identification of inefficiencies and execution of targeted interventions to reduce auxiliary power consumption and environmental footprint.

Industrial Verticals Served

LAXYO has delivered O&M excellence across a range of industrial sectors, including but not limited to:

- Thermal Power Plants (Coal, Gas, and Biomass-Based)
- Cement Manufacturing Units
- Metal and Beneficiation Plants
- Dairies
- Mining and Mineral Processing Units

Each engagement is customized with a bespoke plant management strategy, rooted in a deep understanding of the client's operational environment, production targets and regulatory obligations.

Workforce Proficiency and Technical Superiority

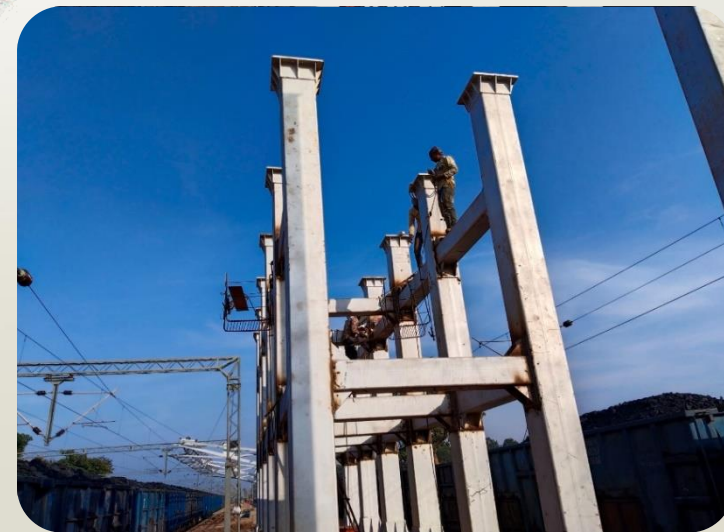
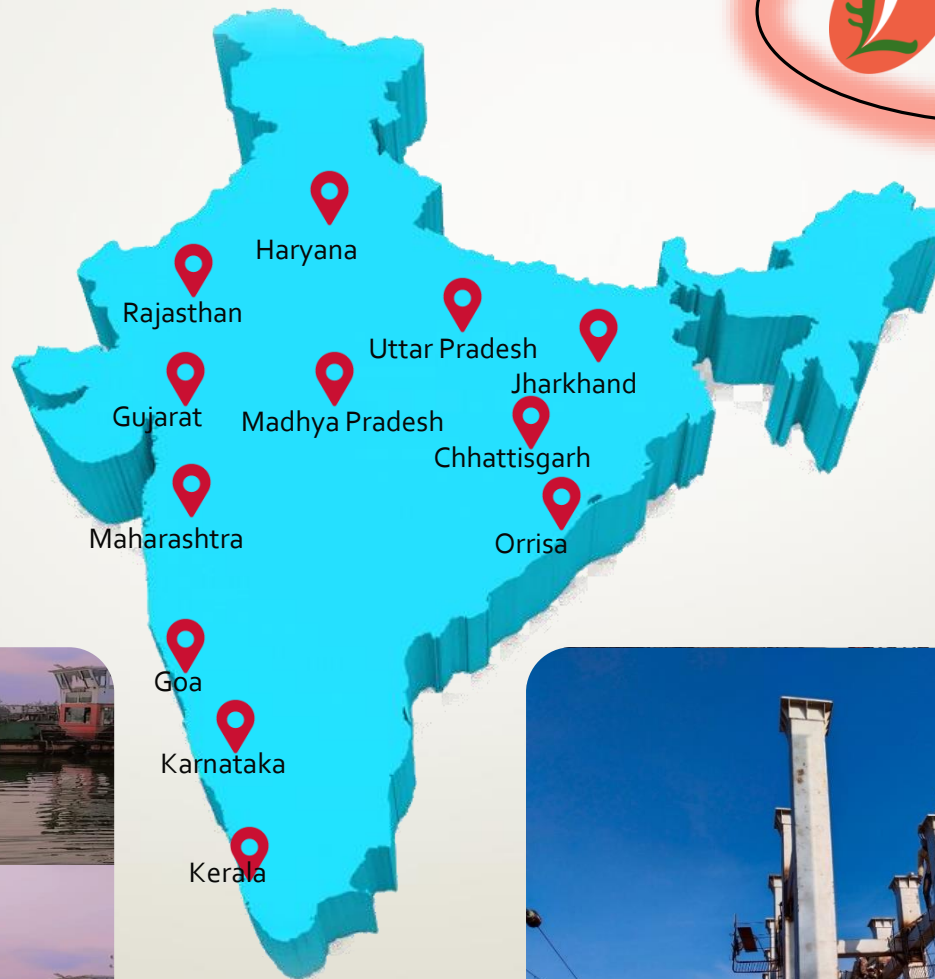
A key pillar of Laxyo's O&M capability lies in its technically adept, safety-certified and multi-disciplinary workforce. Specialists, Engineers, operators and technicians are continually upskilled to handle the evolving technological landscape of modern industrial operations. The company also integrates automation tools and remote monitoring systems to elevate operational visibility and control.

Each project stands as a testament to Laxyo's reputation for punctual execution, reduced outage metrics, and enhanced plant efficiency.

The Laxyo Edge

- Single-point accountability for complex, multi-utility industrial plants
- Cost-efficient O&M models with high uptime guarantees
- Integration of best practices from global benchmarks
- Pan-India execution capability with strategic mobilization strength

Our Presence



ISO CERTIFICATES

 **Registration Certificate**

This is to certify that

LAXYO ENERGY LTD
LAXYO HOUSE, PLOT NO. 02, COUNTY PARK, MR-5, MAHALAXMI NAGAR, INDORE - 452010,
MADHYA PRADESH, INDIA.

has been assessed by RAPL and found to comply with the requirements of

ISO 45001 : 2018
Occupational Health and Safety Management Systems

For the following activities:

TURNKEY CONSTRUCTION OF RAILWAY TRACK INCLUDING LAYING & LINKING, SIGNALLING & TELECOM WORK, OHE WITH EARTHWORK, ROADS, BRIDGES, CIVIL WORK, P-WAY MATERIAL SUPPLY, MINING, RAISE BORE WORK, OPERATION & MAINTENANCE OF INDUSTRIAL/PRODUCTION/PROCESS PLANTS AND RAILWAY TRACKS, DREDGING & RECLAMATION, SOFTWARE DEVELOPMENT WORK, MECHANISED CLEANING & HOUSEKEEPING, RENTAL SERVICES, FABRICATION & ERECTION OF STEEL STRUCTURE.

Certificate Number: E20240611020
Date of certification: 05/06/2024
1st Surveillance on or before: 04/06/2025
2nd Surveillance on or before: 04/06/2026
Certification Valid Until: 04/06/2027



  
Director (Certification)
Royal Assessments Pvt. Ltd.
623 A, Tower-B, 1Thum, Plot No. A-40, Sector - 62, Noida 201301, India.
www.royalapl.com, info@royalapl.com
Phone : +91 120 4251329
This Certificate can be verified at www.royalapl.com

Accredited
OHSMS Certification CAB# 119012

This Certificate remains the property of Royal Assessments Private Limited. Must be returned on request or if certificate is

 **Registration Certificate**

This is to certify that

LAXYO ENERGY LTD
LAXYO HOUSE, PLOT NO. 02, COUNTY PARK, MR-5, MAHALAXMI NAGAR, INDORE - 452010,
MADHYA PRADESH, INDIA.

has been assessed by RAPL and found to comply with the requirements of

ISO 9001 : 2015
Quality Management Systems

For the following activities:

TURNKEY CONSTRUCTION OF RAILWAY TRACK INCLUDING LAYING & LINKING, SIGNALLING & TELECOM WORK, OHE WITH EARTHWORK, ROADS, BRIDGES, CIVIL WORK, P-WAY MATERIAL SUPPLY, MINING, RAISE BORE WORK, OPERATION & MAINTENANCE OF INDUSTRIAL/PRODUCTION/PROCESS PLANTS AND RAILWAY TRACKS, DREDGING & RECLAMATION, SOFTWARE DEVELOPMENT WORK, MECHANISED CLEANING & HOUSEKEEPING, RENTAL SERVICES, FABRICATION & ERECTION OF STEEL STRUCTURE.

Certificate Number: E20240611019
Date of certification: 05/06/2024
1st Surveillance on or before: 04/06/2025
2nd Surveillance on or before: 04/06/2026
Certification Valid Until: 04/06/2027



  
Director (Certification)
Royal Assessments Pvt. Ltd.
623 A, Tower-B, 1Thum, Plot No. A-40, Sector - 62, Noida 201301, India.
www.royalapl.com, info@royalapl.com
Phone : +91 120 4251329
This Certificate can be verified at www.royalapl.com

Accredited
QMS Certification CAB# 119012

This Certificate remains the property of Royal Assessments Private Limited. Must be returned on request or if certificate is

OUR REFERENCES / PRINCIPALS

- M/S Indian Railway
- M/S Bank Note Press (A Government of India Enterprise)
- M/S Bharat Petroleum Corporation Ltd. (A PSU)
- M/S Binani Cement Ltd.
- M/S Birla Corporation Ltd. (Unit - Chanderiya - Rajasthan & Satna - MP)
- M/S Continental Warehousing Corporation (Nhava Sheva) Ltd.
- M/S Dalmia Bharat Cement
- M/S Essar Construction India Ltd
- M/S Maral Overseas Ltd. (An LNJ Bhilwara Group)
- M/S Mundra Port & Special Economic Zone Ltd. (Adani Group)
- M/S Naggarjun Construction Company Ltd.
- M/S Nepa Ltd., Nepa Nagar (A PSU)
- M/S TBEA Energy (I) Pvt. Ltd.
- M/S Ultra Tech Cement
- JUD Cement Ltd. Meghalaya
- M/S Geodesic Techniques Pvt. Ltd.
- M/S Gokul Refoils & Solvent Ltd
- M/S Grasim Industries Ltd. (Aditya Birla Group Co.)
- M/S Indian Oil Corporation Ltd.
- M/S JK Cement Ltd. (Unit - Muddhol-Karnataka, Mangrol, Nimbahera, Rajasthan & Jhahhar-Haryana)
- M/S JK Laxmi Cement Ltd. (Unit - Sirohi - Rajasthan)
- M/S Jindal Rail Infrastructure Ltd.
- M/S Lanxess India Pvt. Ltd.
- M/S Larsen & Turbo (L & T) - ECC Division
- M/S Nitin Spinners Ltd. (A 100% EXPORT ORIENTED UNIT)
- M/S Oriental Foundry Pvt. Ltd.
- M/S P & R Infra Projects Ltd.
- M/S Punj Lloyd Ltd.
- M/S Rajasthan Textile Mills (Sutlej Textiles & Industries Ltd. Group)
- M/S RSWM Ltd.
- M/S Yongnam Holdings Ltd., Singapore
- M/S Container Corporation of India - Mumbai

OUR OFFICES

Registered Office

LAXYO TOWER, 46/1,
T.I.T. Road, Ratlam,
M.P. - 457001
+91 - 7412 - 232432
+91 - 7412 - 232432



LAXYO

We, the energy people...



LAXYO

We, the energy people....

Corporate Office

LAXYO HOUSE, County
Park, Plot No. 2, MR-
5, Mahalaxmi Nagar,
Indore, M.P. - 452010
+91 - 731 - 4996625



LAXYO
We, the energy people....

THANK YOU